



Instructions

Subaru Outback 2015-Present MASS Cargo Shelf SUB

Thank you for purchasing your Subaru Outback 2015-Present MASS Cargo Shelf SUB from AAL! We greatly appreciate your trust in our company. We take that purchase and your commitment to us very seriously. If you have any questions along the way, please don't hesitate to give us a call at 385.202.4188.

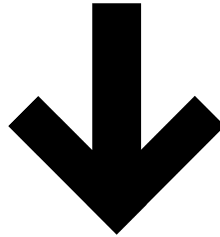
****Please read all instructions carefully****

****This product is only applicable to our MOLLE panels so it is assumed that you already have one installed in your vehicle.****

Tools Required:

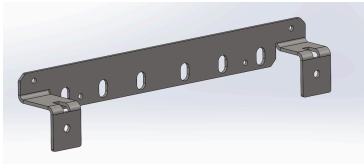
- 4mm Allen Key
- 3mm Allen Key

What's included:

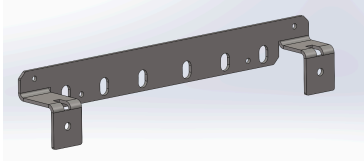


Parts

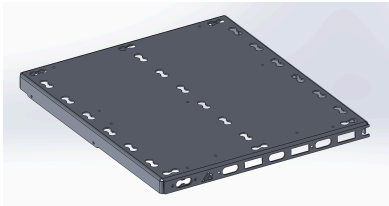
- Driver Mounting Bracket (1):



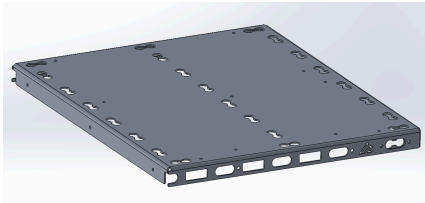
- Passenger Mounting Bracket (1):



- Driver Side Platform (1):



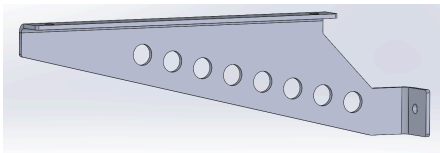
- Passenger Side Platform (1):



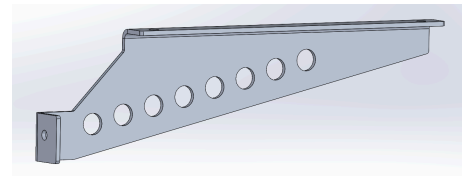
- Connector Brace (2):



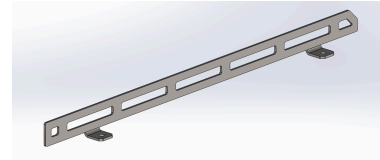
- Driver Side Support (1):



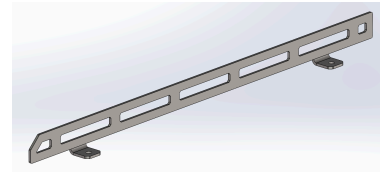
- Passenger Side Support (1):



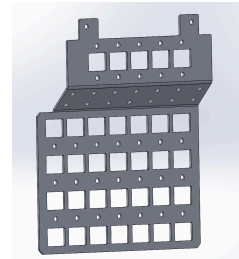
- Left Edge Guard (2):



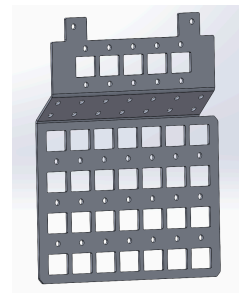
- Right Edge Guard (2):



- Driver Side Molle (1):



- Passenger Side Molle (1):



Hardware

- M6x20mm Button Head Flange Bolt 4



- M6x14mm Button Head Flange Bolts 23



- M4x14mm Button Head Bolt 4



- M6 Nylon Locknuts 31



- M4 Nylon Locknuts 4



Step 1 - Prepare the Trunk Space for Installation

First clear out all potential luggage in the trunk of your vehicle and tilt the rear seats forward. Locate the two covers on the driver and passenger side.

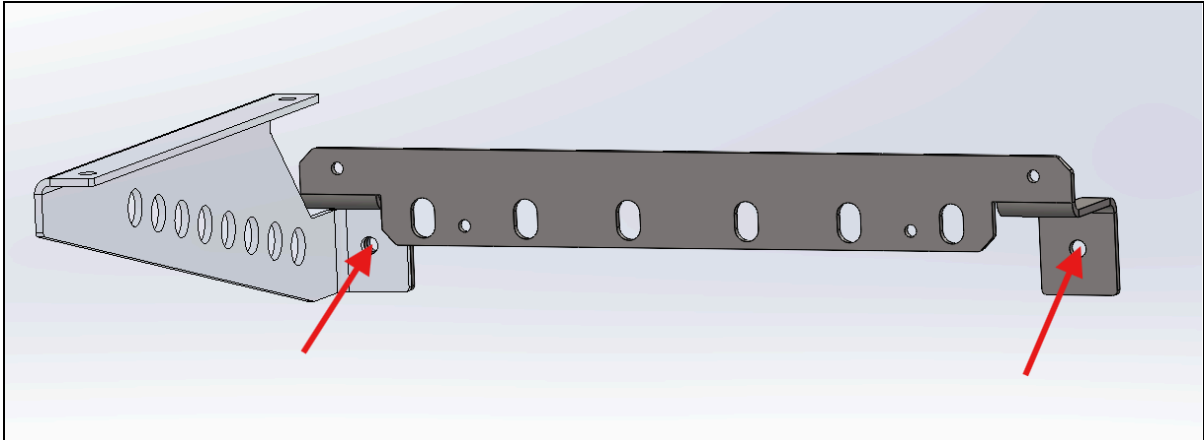


Pop open the cover using a thin screwdriver. Do this on both sides (4 total).

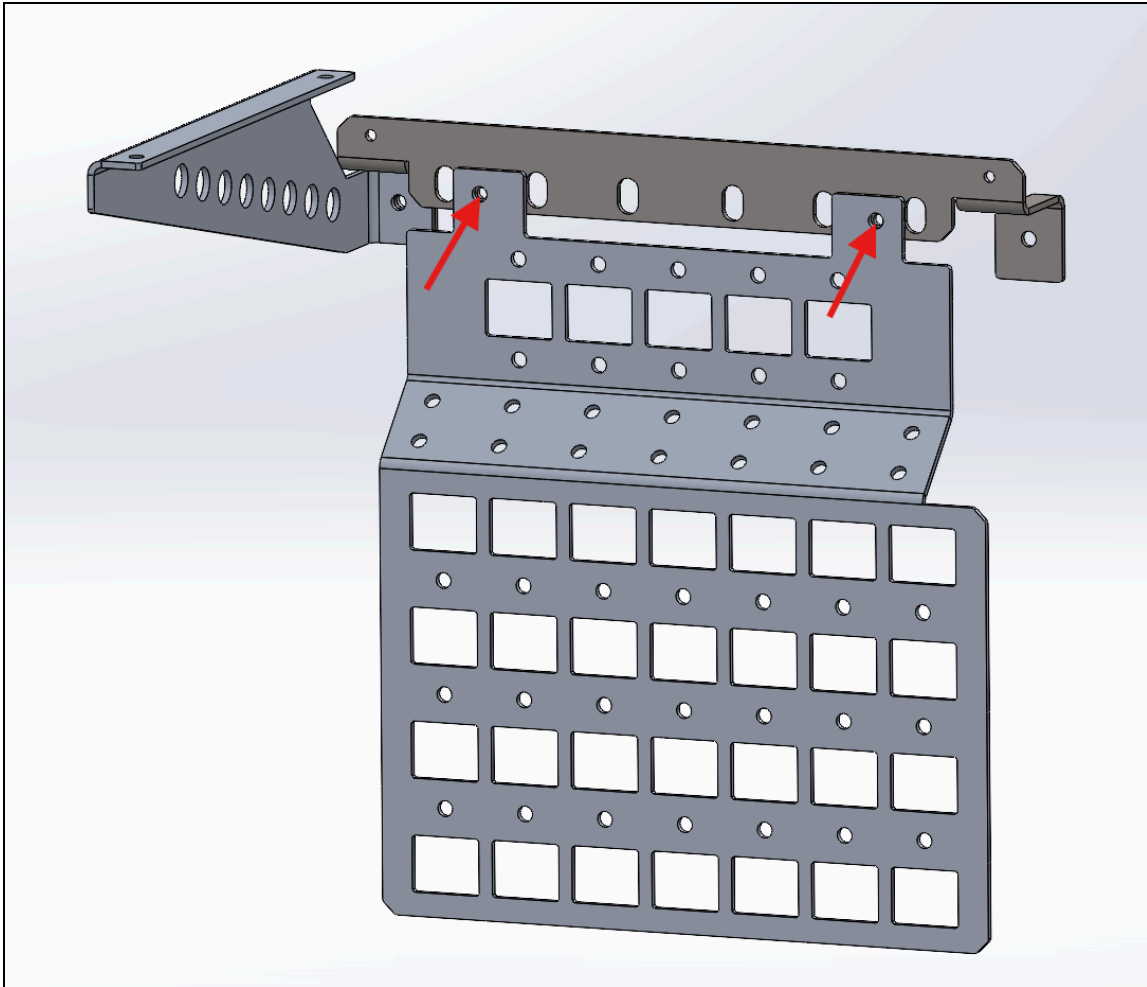


Step 2 - Install the Mounting Brackets

First we need to install the mounting brackets into the spaces we just prepared. Do so using **(2) M6x20mm Button Head Flange Bolts** per side (using the driver side as an example)



Next attach the molle panel using **(2) M6x14mm Button Head Bolts** and **(2) M6 Lock Nuts** per side

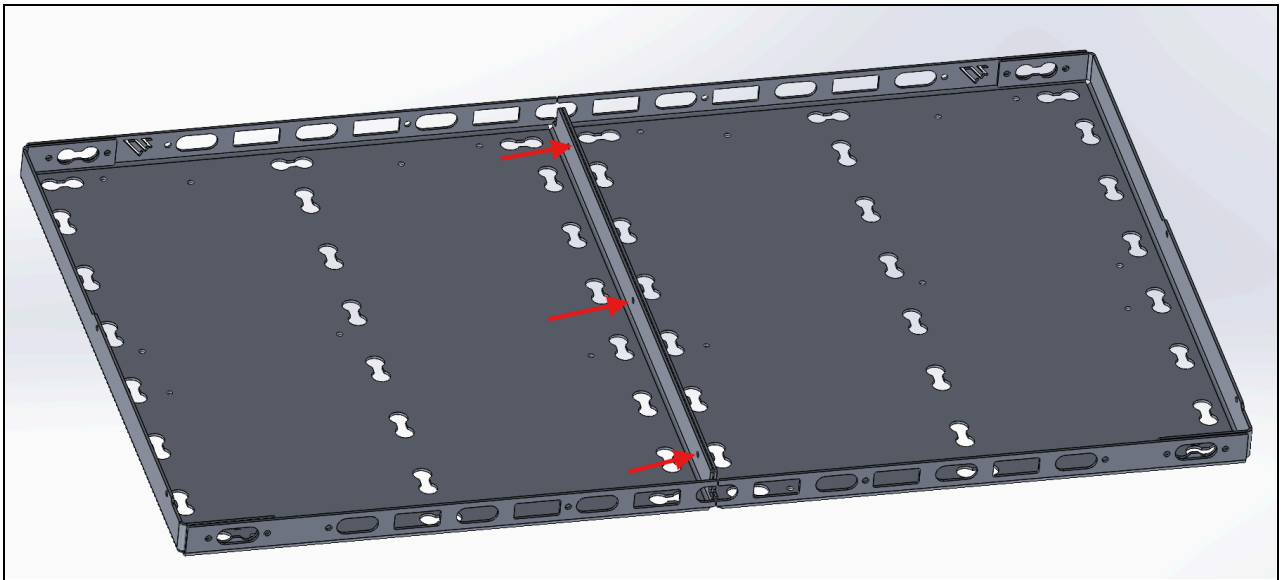


At this point your assembly should appear as follows:

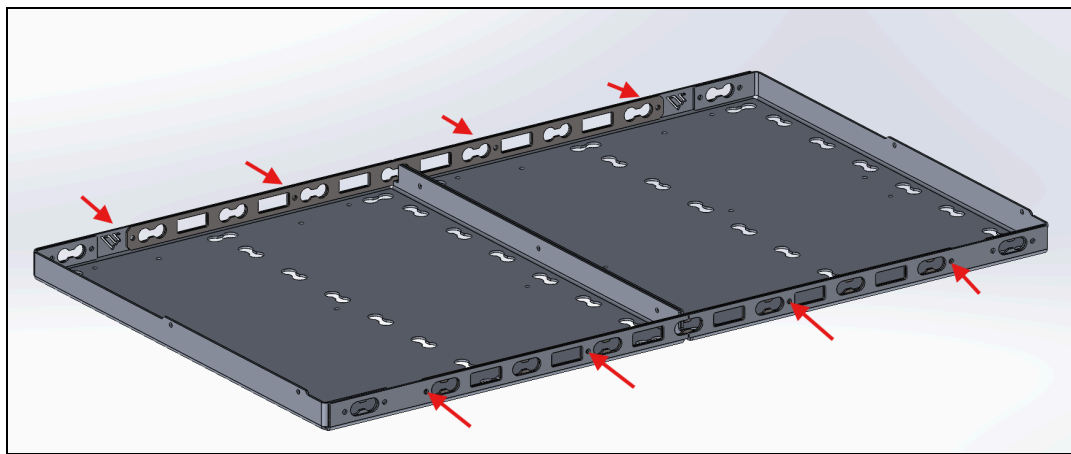
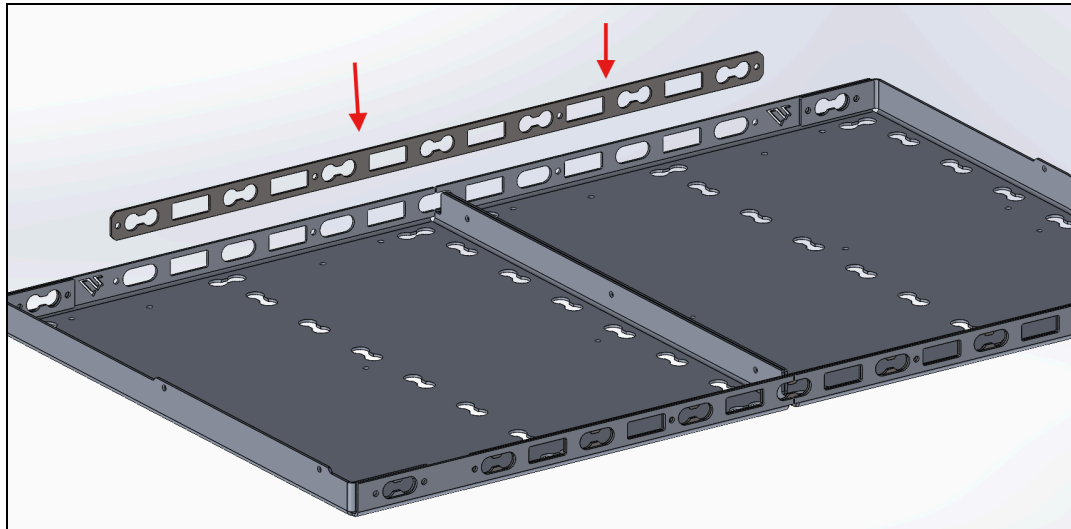


Step 3 - Assemble and Install the Platform

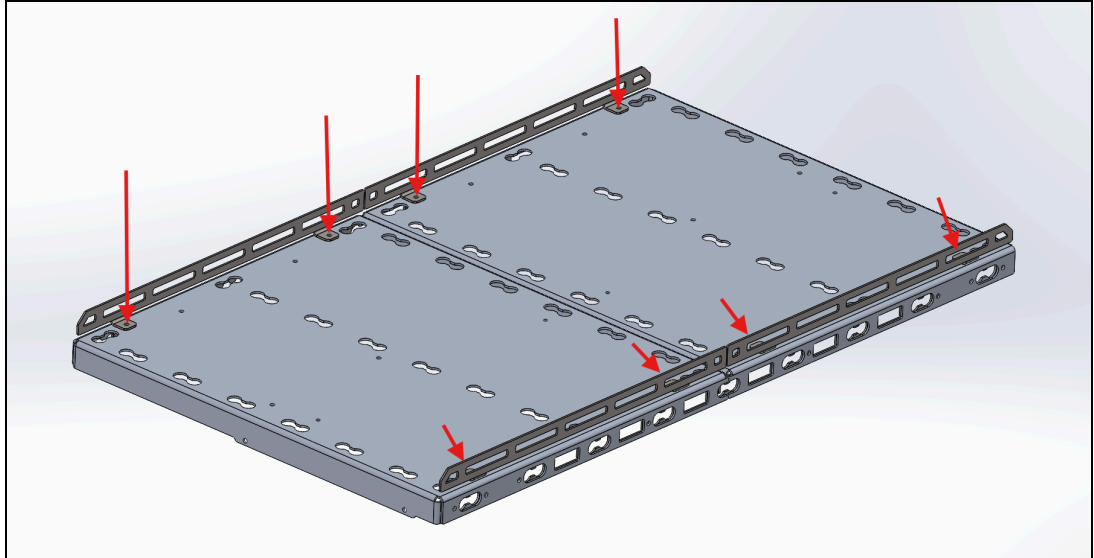
First Locate the two main platforms and set them upside down and adjacent to one another. Fasten them to one another using **(3) M6x14mm Button Head Bolts** and **(3) M6 Lock Nuts**



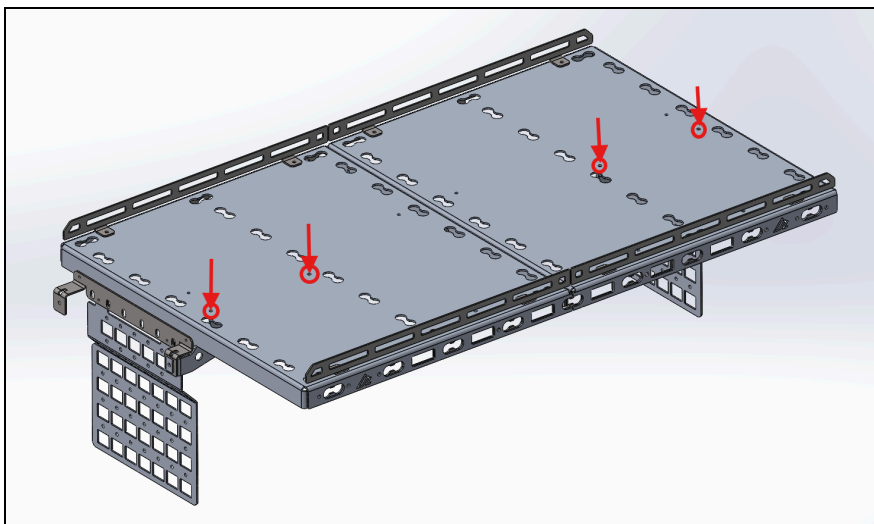
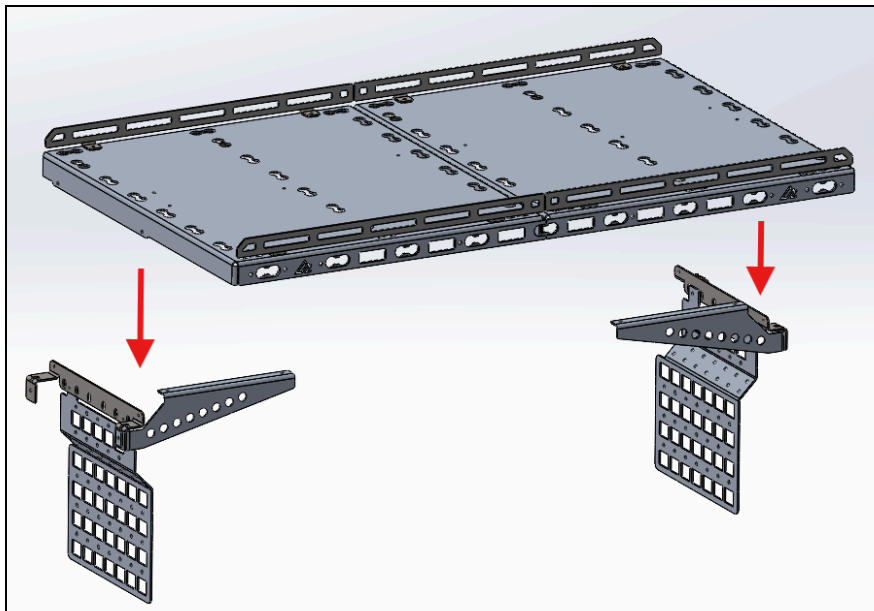
Next slide the two connector braces into the slots on the front and back of the platforms and bolt through the outside face using **(4) M6x14mm Button Head Bolts** and **(4) M6 Lock Nuts per side**



Next we will attach the left and right edge guards through the top of the platform using **(2) M6x14mm Button Head Bolts** and **(2) M6 Lock Nuts per gaurd.**



Now set the platform on top of the mounting pieces and bolt into place using **(2) M6x14mm Button Head Bolts** and **(2) M6 Lock Nuts per side.**



Share Your Photos!

We take great pride in building our products and we hope that pride extends to you after installing your Subaru Outback 2015-Present MASS Cargo Shelf SUB. If you are able to share your photos online (Facebook and Instagram), please tag **@AmericanAdventureLab**. We would love to see how it turned out and give you some reciprocal attention in return!

Congrats! You're all done!

Thank you!

At American Adventure Lab, we strive to improve anywhere we can. If you experience any issues with this product or have any suggestions, please let us know.

If you have any questions or concerns, please don't hesitate to reach out to us at 385.202.4188 or via email at Support@erp.adventurelab.com.

